

customer **care** hotline
main **office**

Chef's Magic Trade Center

1st floor, CYA Bldg. Morato St., San Francisco Del Monte, Quezon City
83762287 to 90
local nos. 101, 102, 111 to 116

AMERICAN HOME[®]

Instruction Manual

Thank you

for purchasing AMERICAN HOME[®] Bar Refrigerator

Carefully read this instruction manual before operating the unit.

ABR-ML2486S2D

bar.refrigerator

3.0cu.ft. Capacity

Distributed by: AHAM CORPORATION

For inquiries call our hotline 8374-4567 to 72
CYA Building Morato Street, San Francisco
Del Monte, Quezon City, 1104 Philippines

Contents

Safety Precautions.....	1
Installation.....	7
Parts Name.....	8
Specifications.....	8
Operations Instruction.....	9
Cleaning and Maintenance.....	12
Troubleshooting.....	15
Disposal.....	16

Safety Precautions



WARNING

WARNING: It is hazardous for anyone other than authorized service personnel to carry out servicing or repairs which involves the removal of parts. Do not attempt to repair this appliance by yourself to avoid the risk of electric shock.

WARNING: Risk of Fire / Flammable Materials:



WARNING: Keep the ventilation openings in the appliance enclosure or in the built-in structure clear of obstruction.

WARNING: Do not use mechanical devices or other means to accelerate the defrosting process other than those recommended by the manufacturer.

WARNING: Do not damage the refrigerant circuit.

WARNING: Do not use any electrical appliances inside the food storage compartments of the appliance unless they are the type recommended by the manufacturer.

Safety Precautions



WARNING

WARNING: Refrigerating appliances – in particular a refrigerator-freezer Type I – might not operate consistently (due to possibility of defrosting of contents or temperature becoming too warm in the frozen food compartment) when set for an extended period of time below the cold end of the range of temperatures for which the refrigerating appliance is designed.

WARNING: The necessity that, for doors or lids fitted with locks and keys, the keys must be kept out of the reach of the children and not in the vicinity of the refrigerating appliance, in order to prevent children from being locked inside.

WARNING: The refrigerant used in your appliance and insulation materials requires a special disposal procedures.

WARNING: When positioning the appliance, ensure that the unit is not placed under a direct sunlight, near a heat source, un-even floor, and make sure that power supply cord is not trapped, tangled, or damaged.

WARNING: Do not use multiple portable socket-outlets or any portable power supplies at the rear of the appliance.

IMPORTANT REMINDER

- Before using it for the first time, please let the appliance stand for about 24hrs before connecting the appliance to the power supply, this is to avoid damage on the compressor.
- If any of the electrical components is damaged, this must be replaced by the manufacturer service agent or similarly qualified personnel to avoid accidents.
- This refrigerating appliance is not intended to be used as a 'built-in appliance' and intended to be used in household and similar application, such as:
 - staff kitchen areas in shops, offices, and other working environment.
 - homestead, clients in hotel, motels, and other residential - type environment.
 - bed and breakfast-type environment.
 - catering and similar non-retail environment.
- This appliance has to be unplugged after use and before carrying out any maintenance and repair or during installation of accessories.

Safety Precautions



WARNING

SAFETY TIPS

THIS appliance is intended for household use only.

THIS is not intended for the use by persons (Including Children) with a reduced physical capabilities, sensory, mental capabilities, lack of experience, and knowledge, unless they have been given supervision or instruction concerning the use of appliance by a person responsible for their safety. Children should be supervised at all cost to prevent them playing with the appliance.

DON'T use electrical appliances such as hair dryer or heater to accelerate the defrosting process of your Fridge/Freezer.

DON'T store any explosive substances such as aerosol cans with a Flammable propellant inside or near the appliances.

DON'T store any containers with flammable materials, such as spray cans, fire-extinguisher refill cartridges etc., inside the Fridge/Freezer.

DON'T place carbonated or fizzy drinks in the Freezer compartment. And be aware that Ice-popsicle can cause Frost/Freeze burns if consumed straight from the Fridge/Freezer.

DON'T remove items from the Fridge/Freezer compartment if your hands are damp/wet, as this could cause skin abrasions or "Frost/Freezer burns". Bottles and cans must not be placed in the freezer compartment as they can burst when the contents freeze.

DON'T allow children to tamper with the controls or play with the appliance. The appliance is heavy, thus care should be taken when moving it around. It is dangerous to alter the specification or attempt to modify the product in any way.

DON'T store inflammable gases or liquids inside your Fridge/Freezer.

DON'T damage the refrigerant circuit.

DON'T use electrical appliances inside the food storage compartments of the appliance, unless they are the type recommended by the manufacturer.

DON'T use extension cords or ungrounded (two prong) plugs.

- Containers with flammable gases or liquids can leak at low temperatures.
- Manufacturer's recommended storage times should be adhered to. Refer to relevant instruction.
- Children aged from 8 years old and above are allowed to load and unload refrigerating items with the appliance.

Safety Precautions



WARNING

Electrical Connection

This appliance should be properly grounded for your safety. The power cord of this appliance is equipped with a plug which mates with the standard wall outlet to minimize the possibility of electrical shock.

under any circumstances, ensure that the power supply cord is grounded. This appliance requires standard 220~240VAC 60Hz electrical outlet with grounding and this refrigerator appliance is not designed to be used with an inverter.

The power cord should be secured behind the appliance and not left exposed to prevent accidental injury and avoid unplugging the refrigerator by pulling the power cord. Always grip the plug firmly and pull straight out from the receptacle.

Do not use an extension cord with this appliance. If the power cord is too short, have a qualified electrician or service technician assist you installing an outlet near the appliance. The use of an extension cord can negatively affect the performance of the unit and the improper use of the grounded plug can result in the risk of electrical shock and if the power cord is damaged, have it replaced by an authorized service center.

Climate Range

The information about the climate range of the appliance is provided on the rating plate which indicates at which ambient temperature (that is, room temperature, in which the appliance is working) the operation of the appliance is optimal (proper).

Climate Range	Permissible Ambient Temperature
SN	from +10°C to +32°C
N	from +16°C to +32°C
ST	from +16°C to +38°C
T	from +16°C to +43°C

NOTE: Given the limit values of the ambient temperature range for the climate classes for which the refrigerating appliance is designed and the fact that the internal temperatures could be affected by such factors as location of the refrigerating appliance, ambient temperature and the frequency of door opening, the setting of any temperature control device might have to be varied to allow for these factors, if appropriate.

Safety Precautions



WARNING



NOTE: When operating in an environment other than the specified climate type (i.e., beyond the rated ambient temperature range), the appliance may not be able to maintain the desirable compartment temperatures.

Locks

If your refrigerator is fitted with a lock, keep the key out of reach and not located in the vicinity of the appliance to prevent children being entrapped. When disposing of an old refrigerator, break off all old locks or latches as a safeguard.

Freon-Free

The Freon-free refrigerant (R600a) and the foaming insulation material (cyclopentane) that is environmentally friendly are used for the refrigerator, causing no damage to the ozone layer and having a very small impact on the global warming. R600a is flammable, and sealed in a refrigeration system, without leakage during normal use. But, in case of refrigerant leakage due to the refrigerant circuit being damaged, be sure to keep the appliance away from open flames and open the windows for ventilation as quickly as possible.

MEANING OF SAFETY WARNING SYMBOLS



Prohibition Symbol

This symbol indicates prohibited matters, and actions.



Warning Symbol

This symbol indicates matters that must be followed strictly in line with the operation requirements.



Note Symbol

This symbol indicates matters to pay attention to prevent minor or major product damage and shall be noted with caution.

This manual contains important safety information which must be observed by the users.

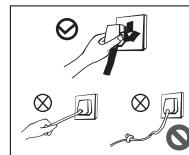
AMERICAN HOME®

Bar Refrigerator

5

Safety Precautions

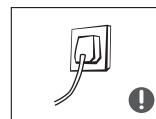
ELECTRICITY RELATED WARNINGS



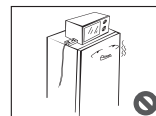
- Do not damage the power cord under any circumstances so as to ensure safety use and do not use it when the power cord is damaged or worn out.
- Carefully handle the plug and a damaged power supply cord must be replaced by a qualified and authorized personnel in order to avoid an accident.



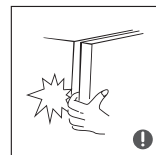
- In case of flammable gas leakage, please turn OFF the valve of the leaking gas then open the door and windows. Don't unplug the refrigerator and other electrical appliances to prevent sparks that may cause fire hazards.



- The power supply plug should be firmly contacted with the socket to prevent fire. Please ensure that the grounding electrode of the power socket is equipped with a reliable grounding line.

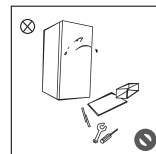


- Always ensure safety by not placing any regulators, rice cookers, microwave ovens, and other appliances on top of the refrigerator.



- Do not place anyone's hand or finger in between the doors gap to prevent them from injuries or any accidents that may involve. Please be gentle when opening and closing the door of the appliance to prevent foods inside from falling.

- Do not pick foods or containers with wet or damp hands from the freezer compartment specially metal containers to avoid frostbites.



- Maintenance and any kind of repair must be done by an authorized personnel.

6

AMERICAN HOME®

Bar Refrigerator

Installation

INSTALLATION LOCATION

Ventilation Condition

The position you select for the refrigerator installation should be well-ventilated and has less hot air. Do not locate the refrigerator near a heat source such as cooker, boiler, and avoid it from direct sunlight, thus guaranteeing the refrigeration effect while saving energy consumption. Do not locate the refrigerator in the damp place, to prevent the refrigerator from rusting and leaking electricity. The result of the total space of the room in which the refrigerator is installed being divided by the refrigerant charge amount of the refrigerator shall not be less than 8 g/ M^3 .

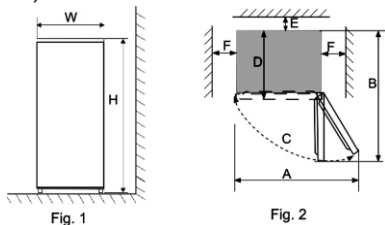
NOTE: The amount of refrigerant charged for the refrigerator can be found on the nameplate.

Heat Dissipation Space

When the appliance is operating, the refrigerator gives off a heat to its surroundings. Therefore, at least 30mm of free space should be spared at the top side, more than 100mm on both sides, and above 50mm at the back side of the refrigerator.

W	D	H	A	B	C(°)	E	F
470	498	845	800	925	130±5	50	100

Dimensions in (mm)



Note: Figure 1, Figure 2 only as a product space demand size schematic diagram.

Level Ground

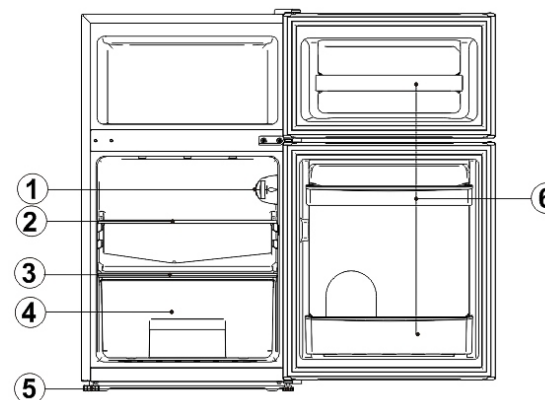
Use the rotating leveling feet of the appliance located at the front and place the appliance on a solid and flat floor to keep it stable, or else, it will give rise to vibration and noise. When the refrigerator is placed on flooring materials as carpet, straw-mat, polyvinyl chloride, the solid backing plates should be applied underneath so as to prevent color change due to heat dissipation.

AMERICAN HOME®

Bar Refrigerator

7

Parts Name



No.	Description
1	Thermostat
2	Fridge Glass Shelf
3	Crisper Cover
4	Crisper
5	Leveling Feet
6	Bottle Racks

Specification

MODEL	: ABR-ML2486S2D
CAPACITY	: 3cu.ft.
TOTAL STORAGE VOLUME	: 86L
GROSS DIMENSION (WDXH)	: 520 x 550 x 879 mm
NET DIMENSION (WDXH)	: 470 x 500 x 845 mm
GROSS WEIGHT	: 27kg
NET WEIGHT	: 24kg
POWER SOURCE	: 230V~60Hz
RATED POWER INPUT	: 61W
RATED CURRENT	: 0.66A
REFRIGERANT	: R600a, 25g
INSULATION BLOWING GAS	: Cyclopentane
ENERGY CONSUMPTION	: 0.739kWh/24h
TYPE OF PREVENTING FROM ELECTRICAL SHOCK	: Class I

AMERICAN HOME®

8

Bar Refrigerator

Operation Instructions

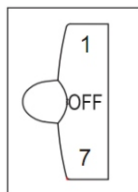
1. Always wipe the appliance dry, after cleaning the refrigerator's components with a small amount of neutral detergent in clear and lukewarm water, then wipe them dry.
2. Turn On the electricity after putting the thermostat in the (4) position. By doing this, the compressor will start up, and the refrigerator's light will turn on.
3. After half an hour, shut the door. The refrigerator's mechanism is operating correctly if the temperature inside the freezer compartment has fallen. The temperature controller will automatically adjust the refrigerator's temperature within its open range after a period of use.
4. After the aforementioned steps are finished and the trial operations are over, the refrigerator will operate as usual.

NOTE: The electric parts of the refrigerator should only be cleaned with a dry cloth.

Adjusting the Temperature

You can change the appliance's temperature by rotating the thermostat dial.

- There are seven settings available for the thermostat.
The "warmest" setting is (1).
The "coldest" setting is (7).
- (4) is the suggested setting.
- To disable the cooling feature, switch the dial to OFF. The amount of objects stored, the frequency of door openings, and the outside temperature can affect the internal temperature of the equipment.



Manual Fast Freeze

1. In order to maintain the original freshness and nutrients of food, fast freezing causes the water in the food to crystallize into fine ice crystals, protecting the cell membrane from injury and preventing the loss of cytoplasm upon thawing.
2. Fish and fresh food that needs to be kept for a long time should be frozen quickly. Before adding the food, please turn the knob switch to mode (7) to achieve quick freezing.
3. Turn the knob back to its initial setting after fast freezing (fast-freezing times should typically not exceed 4 hours).

NOTE: The thermostat setting of (6) or (7) is suitable when the ambient temperature is under 16°C, but may lead to ice formation which is a common occurrence when operating at this setting for a long period of time during normal ambient temperature. It is recommended to adjust back the thermostat setting appropriately.

AMERICAN HOME®

Bar Refrigerator


9

Operation Instructions

During Operation

1. The appliance may not operate consistently (there is a chance of that the contents are defrosting or frozen food compartment being too heated) if it is left for a long period below the cold end of the temperature range for which it is intended.
2. The internal temperature can be affected by the location of the refrigeration device, the outside temperature, and the frequency of door openings. It is advice to adjust the cooling device's settings to consider these factors.
3. Certain items, like water ice, shouldn't be drunk/drink too cold, and it's advised that effervescent drinks should not be kept in low-temperature areas or in the freezer cabinets.
4. No kind of food may be stored for a length of time, greater than that allowed by the food manufacturers.
5. The potential for a temperature increase during manual defrosting, maintenance or cleaning to reduce the frozen food's shelf life.
6. It is best to wrap the frozen food in several layers of glass shelving.
7. When storing frozen foods, care must be taken because power outages or system failures may occur happen.

Food Storing Advice

- Use extreme caution when handling meat and fish. Cooked meats should be stored on the shelf above raw meats to stop the spread of bacteria. Place the raw meats in the refrigerator on a big enough platter to catch fluids and cover with a piece of foil.
- Make space around the refrigerated foods. As a result, the refrigerator stays chilled or cold throughout, thanks to the circulation of cold air surrounding it.
- Foods that have been cooked ahead of time should be properly chilled. Before storing the pre-cooked meals in the refrigerator, let them cool first. This will assist in preventing the fridge's internal temperature from increasing or getting warmer.
- Always minimize the frequency in opening the door to stop chilly air from escaping. Sort the things you want to keep in your refrigerator before opening the door after purchasing them.
- Tips for freezing fresh foods is to use high-quality food and try not to handle it extensively. Food freezes more quickly, thaws more quickly, and may be consumed in the amounts you require when you freeze it in small quantities.
- Don't buy frozen food unless you can freeze it straight away.
- Check the label for Storage Guidelines when purchasing frozen food. Every frozen food item can be stored for the duration indicated by the  4-star rating. This is typically the time frame that is listed as "Best, & Before" on the packaging's front.

AMERICAN HOME®

10

Bar Refrigerator

Operation Instructions

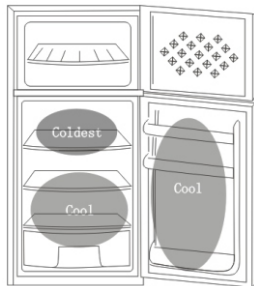
Cool Area

The area where we store foods that will keep longer if kept cool, such as milk, eggs, yogurt, fruit juices, hard cheeses (e.g., cheddar, opened jars, and bottles of salad dressings, sauces, jams, and Fats (e.g.,) Butter, margarine, low-fat spreads, cooking fats, and lard).

Colest Area

The area where we store foods that must kept cold;

- Wrapped raw and uncooked foods
- Pre-cooked Chilled Foods (e.g., Ready meals, meat pies, soft cheeses)
- Pre-cooked Meats (e.g., Ham)
- Prepared Salads (Pre-packed mixed Green Salads, Rice, Potato Salad, etc)
- Desserts (e.g., Aged Fraise, Home-prepared Food, Leftovers and Pastries)



NOTES:

- Always wrap and store raw meat, poultry, and fish on the lowest shelf at the bottom of the fridge. This will stop them from dripping onto or touching other foods. Do not store flammable gasses or liquids in the fridge.
- Food should not be frozen in metal containers since you may want to warm it immediately from the freezer.
- Use plastic containers, aluminum foils, polythene bags, freezer films, and specialty freezer bags that are sold in supermarkets when storing acidic foods (citrus fruits).
- Take out as much air as you can from the container. One option is to purchase a specialized vacuum pump that removes excess air from the container.
- Always refer to the information provided and given on your food packaging when storing your foods.
- Foods that are kept at high temperatures require longer than (4) four hours to cool completely. Before the internal temperature drops, try to open the refrigerator door as little as possible.

Cleaning and Maintenance

Defrosting

After some use, the interior walls of the freezer compartment (or the evaporator) will develop a thin coating of frost, which if it is thicker than 5mm, may interfere with the refrigeration effect. In this situation, an ice scraper should be used instead of metals or sharp hardware to gently scrape the frost off. Frosts should be removed almost every three months. If frosting interferes with regular drawer usage or food access, remove the frosts as soon as possible.

Use the following actions to remove accumulated frost:

1. With the refrigerator door open, remove the frozen products, ensure to turn off the main power supply, and use the ice scraper to carefully remove the frost from the interior wall. Place a dish of hot water inside the refrigerator or freezer to help the thawing process.
2. Once the freezer has thawed, clean the interior and turn on the appliance.

Freezer/Fridge Cleaning Procedure (Interior/Inside)

After defrosting, use a mild solution of baking soda to carefully clean the refrigerator or freezer inside. Next, rinse the appliance using a damp sponge or cloth, dip it into warm water and wipe it dry. Make sure the baskets are clean by giving them a warm soapy wash. Ensure to dry before using the freezer or refrigerator. The refrigerator's back wall will begin to condense, but it usually flow into the drain hole beneath the salad bin and down the back wall. A "cleaning spike" will be put into the drain hole. This ensures that food particles won't get into the drain. Use the "cleaning spike" to ensure that there are no blockages in your refrigerator after cleaning the interior and getting rid of any food residue that may have accumulated.

Freezer/Fridge Cleaning Procedure (Exterior/Outside)

You can use a regular non-abrasive detergent diluted in warm water to clean the outside of the freezer or refrigerator. The condenser grille and surrounding areas at the rear of the refrigerator/freezer can be gently vacuumed with a brush. Stay away from using any chemicals, scouring pads, or any strong cleanser that are harmful to the freezer or refrigerator.

NOTE: Some frost may form within the refrigerator's back section, that is near the water tray (which is situated atop the compressor) and may overflow by opening the door frequently. Do not be alarmed as this can be fix by turning off the electricity and by removing excessive water and frost.

Leave of Absence / Short Vacation / Extended Vacations

- Turn Off the refrigerator before unplugging the refrigerator from the wall outlet.
- Make sure to take all the food out before a long period of absence.
- Clean the refrigerator (Exterior/Interior) before a long absence.
- Keep the lid slightly open to prevent the growth of mold, dampness, or smells.
- Always proceed with an utmost caution when it comes to children. Playing with the unit should not be permitted.
- Short vacations: keep the refrigerator running if the leave of absence is not longer than three weeks.
- Extended vacations: Take out all food and disconnect the power supply cord if the appliance will not be used for a few months. Thoroughly clean and dry the interior. Keep the door slightly open to avoid odors and mold growth; if needed, seal the opening or have the door removed.

Servicing

Only genuine spare parts should be used while servicing this product, and only the authorized personnel should perform repairs. It is not advisable to attempt and try repairing the appliance yourself. Incapable repair personnel will run the risk of harm and injury or may cause damage to the appliance that may lead to malfunction.

Please contact the local store where the purchase has been made. When not using the appliance for an extended period of time, unplug the power supply, remove all foods, clean the appliance, and make sure that the door is slightly open to avoid any unpleasant odors. Additionally, lamps can only be replaced by the manufacturer, together with the part of the unit.

Changing the Lamp

1. Always press and turn the thermostat control dial towards "OFF" before replacing a lamp, and then disconnect the main power supply.
2. Hold and lift up the light lamp cover.
3. Turn the old lamp out by unscrewing it counterclockwise.
4. Make sure the new lamp is securely fastened in the lamp holder by screwing it in clockwise direction, replacing the old one with a maximum 10W lamp.
5. Reinstall the light cover, reconnect the appliance to the main power source, and turn it on.

Energy Saving Tips

- Place the refrigerator away from heating vents or near the area of the room with the lowest temperature, and away from direct sunlight. Avoid putting the appliance near to the equipments that produce heat, like the oven, stove, or dishwasher.
- Never store hot food inside the refrigerator.
- Do not leave the door open for a long period of time. Rearrange the appliance also the interiors to lessen the frequency in opening the door. Always take out as many items that are needed or necessary once the door is opened.
- The door of the refrigerator should be closed properly to avoid additional ice and/or condensation from forming inside, as well as higher energy consumption.
- The appliance maintains a constant temperature throughout by continuous circulation of cold air. It is important to distribute the food appropriately to allow for optimal air flow.
- Before placing food in the refrigerator, cover it and make sure the container is dry. This reduces the accumulation of moisture within the unit.
- Avoid packing the refrigerator too full or blocking the cold air vents. The appliance runs longer and consumes more electricity when this is done. Paper towels, wax-paper, or aluminum foil should never be used to line shelves. Food spoiling may result from liners interfering with the refrigerator's ability to circulate cold air, which reduces its effectiveness.
- When going on extended absences (vacations, for instance), disconnect the refrigerator, take out all the food, and give it a thorough cleaning. To prevent mold and other smells, the door should be slightly open. When it is reconnected, this won't have an impact on the refrigerator.
- Short absences (holidays, for instance) can be spent with the refrigerator running. But keep in mind that prolonged power outages could happen while you're away.

Troubleshooting

Not every one of the following minor errors needs to be repaired by the technical services personnel: Use the following procedures as a reference to help you evaluate and perform a basic analysis.

Problem	Evaluation	Solution
Completely Non-Refrigerating	<ul style="list-style-type: none"> • Is the power supply Off? • Are breakers and fuse broken? • No electricity or line trip? • Is the unit located in balconies, garages, storage room and the other places where the ambient temperature is below 10°C? 	<ul style="list-style-type: none"> • Re-plug the power supply. • Check if the lamp is lit. • Secure Electricity. • Locate the appliance where is the ambient temperature is above 10°C.
Abnormal Noise	<ul style="list-style-type: none"> • Is the refrigerator stable? • Does it contacts with the wall? 	<ul style="list-style-type: none"> • Adjust the unit's adjustable feet/footing. • Distance the appliance away from the wall.
Inefficient Refrigerating System	<ul style="list-style-type: none"> • Too much stored food/hot food? • Opening the door frequently? • Is the door properly closed? • Is the unit located near a heat-source or under the sunlight? • Is the unit well-ventilated? • Is the temperature set high? 	<ul style="list-style-type: none"> • Lessen the load, and avoid storing hot foods/meals. • Do not open the frequently. • Secure the door. • Locate the unit away from the heat sources. • Check the units ventilation away from the wall/object. • Set the temperature appropriately.
Strange Smell	<ul style="list-style-type: none"> • Are there any spoilage? • Does the appliance requires cleaning? • Is the food stored comes with strong flavor/smell? 	<ul style="list-style-type: none"> • Discard the spoiled food • Frequently clean the appliance. • Store/seal foods properly.

Troubleshooting

NOTES: Do not disassemble and repair it yourself if the troubleshooting instructions above are not applicable. Incompetent repairers run the risk of harm and injury or may cause damage to the unit itself resulting to malfunctioning. Please contact the local store where the transaction has been made. Only genuine spare parts should be used while servicing this product, and only authorized personnel should perform repairs.

Remove all food from the appliance, disconnect the power supply, clean it, and leave the door open to avoid unpleasant odors while the device is not in use for an extended length of time.

Disposal

The marking indicates that this product should not be discarded with other household waste in the EU. To avoid potential harm to the environment or human health from neglected waste disposal, recycle responsibly to promote the long-term reuse of material resources. To return your used device, please utilize the return and collection procedures or contact the retailer where you acquired the product as they can recycle this merchandise in an environmentally safe manner.

